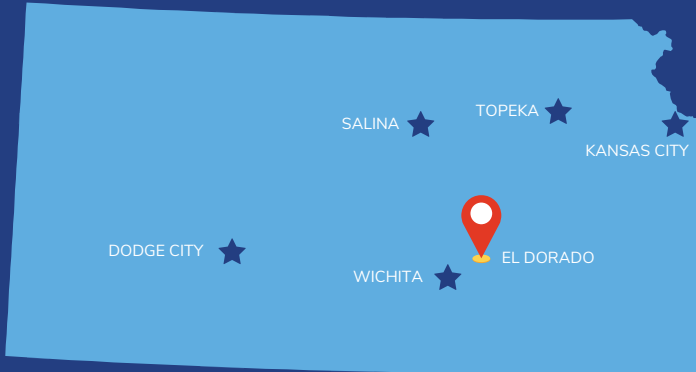


Where is is EL DORADO?



El Dorado is in the middle of it all. Located at the edge of the Flint Hills along Interstate 35, El Dorado is easily accessible. Only 30 minutes from Wichita, Kansas's largest city, we offer unique lodging, cuisine and outdoor adventures you'll love.



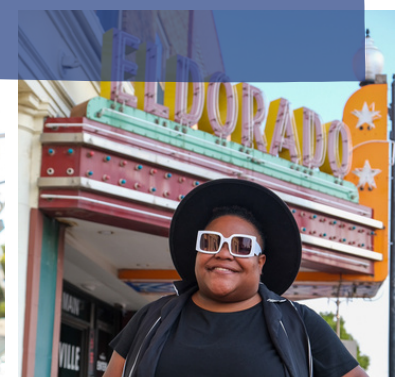
EXPERIENCE EL DORADO

For Visitor Information:

Experience El Dorado
220 E 1st Ave., El Dorado, KS 67042

events@eldoks.com
316-322-4449
www.experienceeldo.com

El Dorado Chamber of Commerce
201 E Central Ave., El Dorado, KS 67042



EL DORADO'S HOMETOWN BEER



VISIT OUR TAPROOM
111 W. LOCUST



WALNUTRIVERBREWING.COM

El Dorado, located 25 miles from Wichita, 170 miles from Kansas City and 185 miles from Oklahoma City, is at the edge of the famous Flint Hills. We are centrally located off Interstate 35 and have it all - nature, culture, art and more!



WELCOME

3

3

Welcome

4-5

El Dorado Lake

6-7

Community Partners

8-9

Attractions

10-11

Community Map

12-13

Eat Local

14-15

Shop Local

16-17

On the Town

18-19

Sports & Facilities

20-21

Community Partners

22-23

Area Attractions & Lodging



Welcome to El Dorado, Kansas! We have a little something to offer everyone. Let us show you around!

Whether you're meeting friends, making new friends or looking for something out of the ordinary, El Dorado has it all. From El Dorado Lake to our charming downtown and everything in between, we're happy you chose to visit us!

El Dorado, meaning "the Golden Land", was established in 1871 and grew quickly due to the discovery of the El Dorado Oil Field. By 1918, El Dorado was the largest single producer of oil in Kansas and was responsible for 9% of the worldwide production.

In recent years, El Dorado has become a thriving community with welcoming residents and a unique location that's "in the middle of it all." We're home to BG Products Veterans Stadium, Butler Community College and much more!

Kansas's Largest State Park

ksoutdoors.com



The largest State Park in Kansas and home to El Dorado Lake, **El Dorado State Park** is located just north of town on the edge of the beautiful Flint Hills.

One of the top state parks in America for fishing, boating and family fun, El Dorado features 2,000 acres of park, 4,000 acres of wildlife area, 8,000 acres of water and 98 miles of shoreline. The area is also home to a wide range of mammals, songbirds, game birds and waterfowl.

THE STATS	10 modern cabins	589 primitive campsites	10 shelters	307 electric & water hook-ups
------------------	----------------------------	-----------------------------------	-----------------------	---



Boulder Bluff



Walnut River Campground



Bluestem Point Campground



Shady Creek



Sail into the sunset

Learn to sail with the Walnut Valley Sailing Club! Since 1985, this sailing club has offered great sailing and social experiences. It features a number of social events, activities, races and a clubhouse available to members. The WVSC learn-to-sail program for youth and adults is regionally renowned with a goal of training the sailors of tomorrow. wvsailingclub.com

Go for a ride

The City of El Dorado and El Dorado State Park is connected via a 3.8-mile pedestrian and bike trail stretching from East Park to the Boulder Bluff Campground. Find a map at eldoks.com!

THINGS TO DO

- Bluestem Point Swimming Beach
- Walnut River Swimming Beach
- Nature & Hiking Trails
- Shooting Range
- Archery Range
- Fishing
- Equestrian Trail
- Marina



Walnut Valley Sailing Club

Host your next event here!



El Dorado Fun Center



307 S Haverhill
(316) 452-5410
eldoradofuncenter.com



Misfit Kitchen LLC
The Street Food Revolution



find us on social media!

@MISFIT_KITCHEN

MISFIT.KITCHEN.LLC@GMAIL.COM

El Dorado's Favorite Food Truck!
Ask us about catering & special events!



Home of the MacStack Sandwich!

Bowling

Mini Golf

Restaurant

Patio

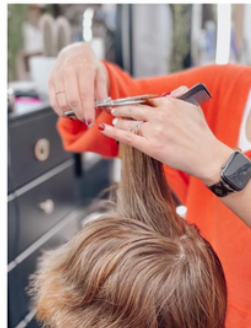


Treat yourself!

District 142
142 N Main Street
Suite 125



Full service Salon & Spa
Haircut • Color •
Extensions • Waxing •
Lashes • Facials



Follow us on social media:
@studio142salonandspa



BREWCO COFFEE HOUSE

DILLY DELI

139 N MAIN
BREWCO.ELDO.COM



PATIO SEATING AVAILABLE | PARKING IN BACK





Walters' Pumpkin Patch

WALTERS' PUMPKIN PATCH

Walters' is the most popular pumpkin patch in South Central Kansas - and it's not hard to see why! A 30-acre pumpkin patch, corn maze, giant jumping pillows and more make Walters' the top family destination in the area. Located just 10 miles North on Highway 77. thewaltersfarm.com

KANSAS OIL MUSEUM

The Kansas Oil Museum is one of the largest museums in the state with a focus on the history of America's early 20th-century oil industry. Visit "Boom Town" - an outdoor exhibit furnished as if the town's inhabitants had never moved on. kansasoilmuseum.org

COUTTS ART MUSEUM

Established in 1970, "The Coutts" is located downtown in the historic Butler State Bank building and houses three floors of art from Makk, Walton, Remington and more! Free Admission couthmuseum.org



Coutts Art Museum

TOP FAMILY ATTRACTIONS



Enjoy an afternoon at Walters' Pumpkin Patch



Tour the Coutts Art Museum



Go bowling at El Dorado Fun Center



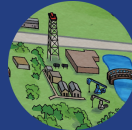
Take an art walk downtown



Spend a day outdoors at El Dorado Lake



Cheer on the Butler Grizzlies at BG Stadium



Learn about Kansas history at the Kansas Oil Museum



Catch an El Dorado Walnuts game at McDonald Stadium



El Dorado Fun Center

EL DORADO FUN CENTER

El Dorado Fun Center features a bowling alley, 16-hole mini golf course, heated patio and Van's Sports Bar! El Dorado Fun Center hosts a number of events throughout the year including live music on the patio and tournaments. eldoradofuncenter.com

El Dorado is no stranger to special events - from City of Gold Festival to Old Fashioned Christmas! Visit ExperienceELDo.com for a complete list of community celebrations.



Hello!

Welcome to El Dorado
 (pronounced El-doh-RAY-doh
 by locals). We are a city of
 blue collar workers, artists,
 foodies, sports fans and
 outdoor enthusiasts. We hope
 you enjoy your stay in our city!

Looking for
 things to do?
Scan me!



Points of Interest

- BG Stadium | 400 S Haverhill
- Bradford Memorial Library | 611 S Washington
- Butler Community College | 901 S Haverhill
- Butler County Courthouse | 205 W Central
- City Hall | 220 E First
- Civic Center | 201 E Central
- Courts Art Museum | 110 N Main
- Disc Golf | 604 SW Haverhill
- East Park | 100 S Woodland
- El Dorado Fun Center | 307 S Haverhill
- El Dorado Theatre | 206 S Main
- Forest Park | 900 N Taylor
- Gordy Park | 300 S Gordy
- Greetings From El Dorado Mural | 101 S Main
- Kansas Oil Museum | 383 E Central
- McDonald Stadium | 298 N Griffith
- North Main Park | 900 N Main
- Prairie Trails Golf Course | 1100 Country Club
- Performing Arts Center | 500 W Central
- Shady Creek Campground | 1000 NE Marina
- Shooting Range | 2980 NE Shady Creek Access
- Walnut River Brewing | 111 W Locust
- Walnut River Campground | NE Walnut River Dr
- Walters' Pumpkin Patch | 10001 NW Hwy 77



Moe's Grill

Taste El Do



Fiesta Mexicana

El Dorado has a dining culture as unique as the city itself. From classic dishes to food trucks, you won't leave with an empty stomach!

El Dorado's signature dish, the Veal Sandwich, can be found at numerous restaurants around

town including Hampton's and Moe's Grill. You can't leave town without trying this iconic local staple.

Up for a quick drive? Try Stearman Field Bar & Grill in nearby Benton and enjoy dinner while watching airplanes come and go.

Must-Try Dishes

- **Pork Veal Sandwich** at Hampton's
- **The Mac Stack** at MisFit Kitchen
- **Scotty Special** at Fiesta Mexicana
- **Kettle Chicken Sandwich** at Dilly Deli
- **Nacho Madness** at Willie's

Local Favorites

- Moe's Grill (American)
- Beijing Bistro (Chinese)
- La Casita (Mexican)
- Sugar Shane's (American)
- Ori Hibachi (Japanese Food Truck)
- Anita's (Mexican)
- Turner's Coffee & Donuts (Breakfast)



Ori Hibachi



Sugar Shane's



BrewCo. & Dilly Deli

CAFFIENE ESSENTIALS

Located in the heart of downtown is a local coffee shop, deli and gift boutique you won't want to miss! BrewCo. & Dilly Deli features your favorite espresso drinks, artisanal sandwiches and the essential El Dorado Flag gifts you need to remember your visit. 139 N Main | brewcoeldo.com



Robin's

A weekend away isn't complete without a splurge at some of El Dorado's local boutiques, gift shops and antique stores! From well-known favorites like Robin's to unique gems such as Kelly's Etc., we have a little something for everyone.

THE ROSE BUFFALO

Shop Local!

Women's & Kid's clothing, accessories & gifts

142 N Main Ste. 130

therosebuffalo.com

EVERY DAY WE WORK FOR YOU.
SERVING BUSINESSES. SERVING OUR COMMUNITY.

Shop Local.

- **Walter's Interiors**
(gifts, florals, decor)
- **Robin's**
(women's clothing)
- **Kelly's Etc.**
(gifts, florals)
- **Great Beginnings**
(second-hand clothing)
- **BrewCo. & Dilly Deli**
(gifts & food)
- **Psycho Kitty Creations**
(antiques & gifts)
- **The Rose Buffalo**
(women's clothing)
- **Amber Waves of Fiber** (fiber arts)
- **Trunk2Treasures Boutique** (gifts, clothing)
- **Eyewear Junkie** (eyewear)

Our mission is to enhance and develop the economic vitality of businesses through community leadership, education, advocacy and relationship development.

EL DORADO

CHAMBER

OF COMMERCE

Unifying the Business Community Since 1921

Join the Chamber Today!
www.eldoradochamber.com



Club Vaudeville

Drink Local

From craft breweries to swanky night spots to honky-tonks, El Dorado has nightlife and locally-produced drinks for everyone.

- **Walnut River Brewery** | Kansas's top rated craft brewery. 111 W Locust
- **True Lies** | Home to El Dorado's largest dance floor, live country music and a full restaurant. 607 Oil Hill
- **Club Vaudeville** | Swanky nightspot located in the historic El Dorado Theatre. 206 S Main
- **The Blue Goose** | El Dorado's original dive bar featuring live music. 120 E 4th
- **Van's Bar & Grill** | Located at El Dorado Fun Center, Van's features a full menu, bar and live music on the patio. 307 S Haverhill



Van's Bar & Grill



Walnut River Brewery

LOCAL BREWS

El Dorado's hometown beer; Walnut River Brewery has established itself as an iconic El Dorado brand - with a state-wide following. Located in downtown, the taproom is housed in a historic building that has served as everything from a grocery store to a brothel. The taproom serves WRB staples - such as Warbead and Teter Rock - and rotating brews. 111 W Locust | WalnutRiverBrewing.com



206 S MAIN | 316- 844- 3993

FIND US ON

EVENT FACILITIES

El Dorado Civic Center | 201 E Central Ave

The perfect venue for events large or small. The Civic Center offers 9,000 square feet of rentable space with a large assembly room and smaller breakout rooms.

El Dorado Train Depot | 430 N Main St

A former Missouri Pacific passenger train station, the Train Depot offers two rentable spaces perfect for intimate parties or events.

Butler County Community Building | 206 Griffith

Community space available for events up to 300 people at the Butler County Fair Grounds.

Clifford Stone Room | 901 S Haverhill Rd

Multi-use event space at Butler Community College. The Clifford/Stone room, located in the new Welcome Center, can accommodate groups up to 400 people.

Walters' Pumpkin Patch | 10001 NW U.S. Highway 77

Rustic venue for corporate events and weddings. The Events Barn can accommodate groups up to 250 people.

For a complete list of event and wedding venues, visit ExperienceEIDo.com



BG Stadium

Parks & Sports

We've got the parks and facilities to keep you active or host your next tournament!

El Dorado is home to the 5,800-seat BG Products Veterans Sports Complex, home of the Butler Grizzlies and El Dorado High School Wildcats. In addition to football games, BG Stadium hosts a number of community events each year including Drums Across Kansas, concerts, movies and other sporting events.

SPORTING FACILITIES

BG PRODUCTS VETERANS STADIUM | 400 S Haverhill

MCDONALD STADIUM | 298 N Griffith

SAM BINTER TENNIS COURTS | 1000 N Main

WALNUT RIVER SOCCER COMPLEX | 1384 NE Shady Creek

CENTRAL PARK BASEBALL DIAMONDS | 200 N Griffith

EL DORADO ACTIVITY CENTER | 401 McCollum Rd



NATIONALLY-RECOGNIZED
Fine Arts Performances

Ready for better

PROGRAMS guided by
INDUSTRY-PROFESSIONAL
Advisory Boards

8 SPORTS TEAMS
WITH 13 NATIONAL CHAMPIONSHIPS



ButlerCC.edu    Connect with us.

PRAIRIE TRAILS GOLF COURSE

- 18 Hole Course
- Restaurant
- Driving Range



Open to the public!

1100 Country Club Ln.
316-321-4114

www.PrairieTrails.com
golfshop@prairietrailsgolf.com



BEACH THEMED CAFE WITH
A FULL BAR AND PATIO!

LOCATED AT PRAIRIE TRAILS
GOLF COURSE!



OPEN TO THE PUBLIC!
316-313-2675



EL DORADO'S ORIGINAL DIVE BAR!

LIVE MUSIC | BEER | COCKTAILS | POOL TABLES

120 E 4TH AVE. - (316)-452-2769

30 ACRE PICK YOUR OWN PUMPKIN
PATCH, CORN MAZE, HAUNTED
CANNERY, 2 GIANT JUMPING PILLOWS,
GOATS, AND SO MUCH MORE.
NORTH OF EL DORADO AND
APPROXIMATELY 30 MINUTES
NORTHEAST OF WICHITA.

316.320.4150

10001 N.W. Hwy. 77, Burns, KS 66840

WALTERS' PUMPKIN PATCH

#WhereFallBegins

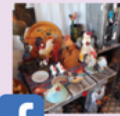
NAFDMA
INNOVATION
AWARD 2022

STATE OF KANSAS
BEST PUMPKIN
PATCH 2021
BY KENNETH COOK

If it's fun, creative or sometimes weird,
you can find it here!



Creations by local artisans
& historical finds repurposed



PSYCHO
KITTY
CREATIONS

Open Tuesday - Saturday



- Jellies
- Textiles
- Home decor
- Paintings
- Bath & body
- Jewelry
- Antiques
- And More!



313 S. Main • El Dorado • 316-323-4161 • www.psychokittycreations.com

MAY
DINNER UNDER THE STARS &
CONCERT AT THE CREEK

JUNE
AS AMERICAN AS APPLE PIE &
KEG IN THE CORN

SEPTEMBER
SIPS SUNFLOWERS AND PAINT
SEPTEMBER SUNFLOWERS
PUMPKINFEST OPENING
HAY BALE DECORATING CONTEST
MOVIE NIGHT ON THE FARM

OCTOBER
SIPS PUMPKINS AND PAINT
OLD TIMERS DAY & COWBOY SHOOTOUT
ALL YOU CAN CARRY

NOVEMBER
FIND THE WINE

OPEN 3RD WEEKEND IN
SEPTEMBER THROUGH
OCTOBER 31ST



NOTHING TEACHES YOUNG MINDS
QUITE LIKE A HANDS-ON JOURNEY
THROUGH A REAL WORKING FARM.
OUR HAYRIDE WILL TAKE YOUR
CLASS RIGHT INTO THE FIELD TO
DISCUSS HOW PUMPKINS ARE
GROWN! EDUCATIONAL FIELD
TRIPS WEDNESDAY, THURSDAY,
AND FRIDAY DURING
PUMPKINFEST.

RESERVATIONS ARE REQUIRED
FOR SCHOOL GROUPS.

TheWaltersFarm.com



Wayne Watts

Are you ready to buy a new home or sell your home?



Sun Group Realtor

Office 316 321-1600

Cell 316 377-0681

wayne@SunGroupRealEstate.com

121 N. Main St. El Dorado, Kansas 67042



Teter Rock

Teter Rock | Originally erected as a guidepost for homesteaders near Teterville. The landmark was reconstructed in 1954 and offers breathtaking views of the Flint Hills.

12976 NE 135th St, Cassoday, KS

Grace Hill Winery | Beautiful vineyard and event space located north of El Dorado in Whitewater. Book a tasting and enjoy live music Fridays and Saturdays.

GraceHillWinery.com



Stearman Field | Located in Benton, Stearman Field is a private airport with a restaurant, bar and event space.

StearmanBarAndGrill.com



Tallgrass National Prairie Preserve | 10,000+ acre preserve located in the Flint Hills near Cottonwood Falls. Enjoy hiking trails or tours of historic buildings including a school house and farmhouse.

nps.gov

Find more online! ExperienceELDo.com



- **HOLIDAY INN** ★★★
3100 El Dorado Ave | 316-322-7275
- **DAYS INN & SUITES BY WYNDHAM** ★★★
3200 El Dorado Ave | 316-452-2992
- **PACIFIC HOTEL** ★★★
117 W Third Ave | 316-734-9972
- **SUPER 8** ★★
2530 W Central Ave | 316-313-4219
- **BAYMONT INN & SUITES BY WYNDHAM**★★★
2525 W Central Ave | 316-251-9910
- **HERITAGE INN & SUITES** ★★
2515 W Central Ave | 316-321-6800
- **SKY PALACE INN & SUITES** ★★
1901 W Central Ave | 316-321-9172
- **THE INN** ★
1126 N Main | 316-321-3598
- **EL DORADO LAKE STATE PARK**
618 NE Bluestem Rd | 316-321-7180
- **DEER GROVE RV PARK**
2873 US HWY 54 | 316-321-6272

★ Google Rating

EXPERIENCE
EL DORADO

El Dorado's Convention & Visitor's Bureau

Special Events | Group Bookings | Tours
Visitor Information

